



## i1Pro 3 Spectrophotometer



### Taking Calibration and Profiling to the Next Level.

Continuing to revolutionize the market as the leader in color profiling solutions.

The i1Pro 3 is specifically designed for print and imaging professionals who require accurate color from their printer, display, and projector, want to track and verify monitor and print quality, and need to capture spot color measurements. Equipped with industry-leading technology, the i1Pro 3 delivers more accurate and reliable results than any other device in its category and is two times faster than its predecessor. It offers a full-spectrum LED light source, innovative design to help facilitate cleaning for accurate measurements, and enhanced single-pass scan capabilities.

### Optimized Calibration and Profiles

- Offers a custom, full-spectrum LED light source, which allows for single-pass scanning and improves device reliability and accuracy
- Measures M0, M1, and M2 simultaneously in a single pass to account for optical brighteners
- Reads patches twice as fast as the i1Pro 2 with improved accuracy
- Achieves correct calibration on high brightness displays (up to 5k NITs)
  - Matches up to four displays connected to a single computer and unlimited displays connected to different computers for consistent viewing
- Optimizes automated file creation for less time and material waste during production when combined with the i1i0 automated scanning table

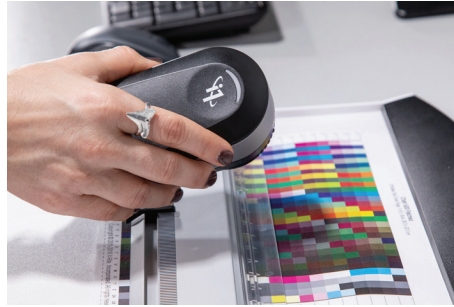
### User-Centered Features

- Provides real-time user feedback to ensure accurate measurement position and a self-check tool to adjust and correct minor shifts
- Equipped with the X-Rite Graphic Arts Standard (XRG) to ensure reliable and repeatable data between all links in a supply chain
- Features an ergonomic design for easy cleaning and accurate measurements

# i1Pro 3 Spectrophotometer



Equipped with full-spectrum LED light source for accurate readings.



Enables more patch reads per target and provides increased accuracy.



Compatible with high-brightness displays up to 5K NITs.

## Integration with i1iO Generation 3 Table

The new i1iO Generation 3 Table – an automated scanning table – enables hands-free chart reading for automated color profiling. Combined with the i1iO, the i1Pro 3 optimizes automated file creation allowing for a reduction of wasted time and materials during production.



## Which i1 product works best for you?

	i1Basic Pro 3	i1Photo Pro 3	i1Publish Pro 3	X-Rite i1iO for i1Pro 3
i1Pro 3 Spectrophotometer	✓	✓	✓	
Hands Free Automation	With i1iO Table	With i1iO Table	With i1iO Table	Requires i1Pro 3 device not included
Display/QA	✓	✓	✓	
Projector	✓	✓	✓	
Scanner/RGB Printer		✓	✓	✓
CMYK/CMYK+ Printer			✓	✓
Printer QA	✓	✓	✓	✓
PANTONE Color Manager	✓	✓	✓	
ColorChecker Camera Profiling		✓	✓	
ColorChecker Proof/ColorChecker Classic Mini		✓	✓	

## Service Support & Warranty

X-Rite's color analysis and measurement solutions are engineered and manufactured to the most rigorous quality standards. These standards are backed by comprehensive global service, superior phone and web support, and preventative maintenance options to optimize your long-term investment. We have developed service support and warranty plans that are unique to your organization's specific products and needs.