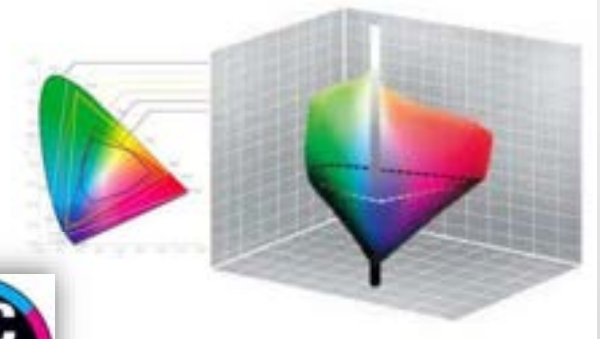


THE SOFTWARE: COLOUR PROFILER 5

A complete solution for ceramic color management



COLOUR PROFILER ADVANTAGES:

COLOR PROFILE (GAMUT) CREATION

AUTOMATIC CREATION of «ICC» PROFILES

ICC profiles created by the software to assign in Photoshop for a perfect ceramic preview

PROFILING (CLOSED RING)

PREVIEW RENDERING

Monitor preview of final result: IN-Gamut / OUT-of-GAMUT percentage

SOFT PROOFING ON PAPER

Final ceramic result simulated on paper printers

PROFILING ON STAINED GLAZES

Optimization of the image for the colored glaze

DEVICE LINK

Automatic transformation of the printing files from a printing process to another one

CHECKING AND COMPARISON

Controls of the consistency (in time) of the process and analysis and comparison

COLOR PROFILE (GAMUT) CREATION 1 of 2

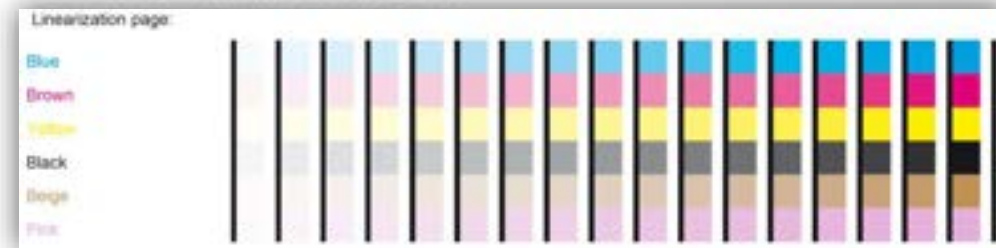
Analyze the single ink grow and the max intensity

A. DATA LOADING

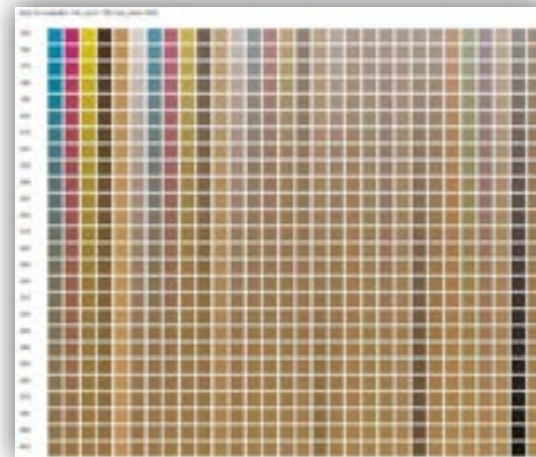


Define before to print the inks order and the printing resolution, the software will prepare images ready to print!

B. LINEARIZATION



C. TOTAL INK LIMIT



Analyze the total ink limit to avoid inks problem on the print out and use only the correct quantity of ink

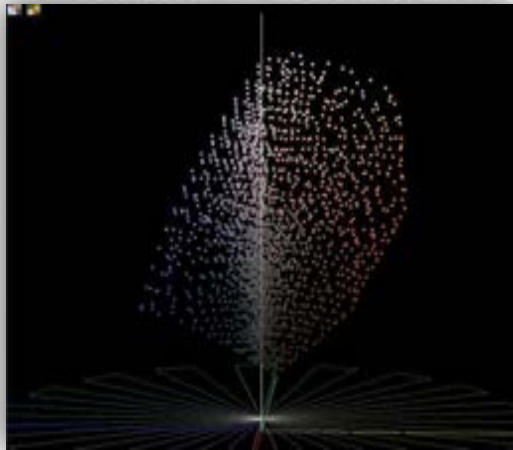
COLOR PROFILE (GAMUT) CREATION 2 of 2

D. PROFILATION

Mix the inks to know all the possible combinations of color (gamut)

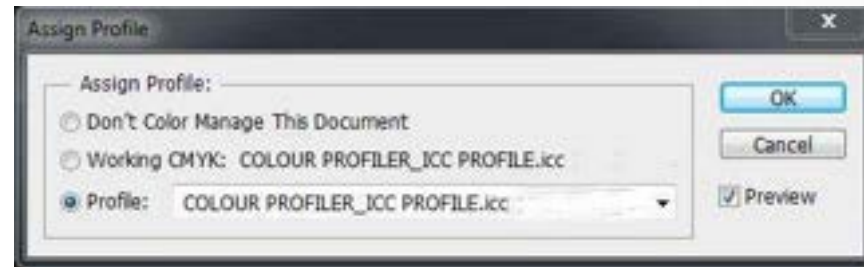


E. GAMUT CREATION



Gamut calculation, «know the color possibilities» of the analyzed printing condition

F. ICC PROFILE CALCULATION

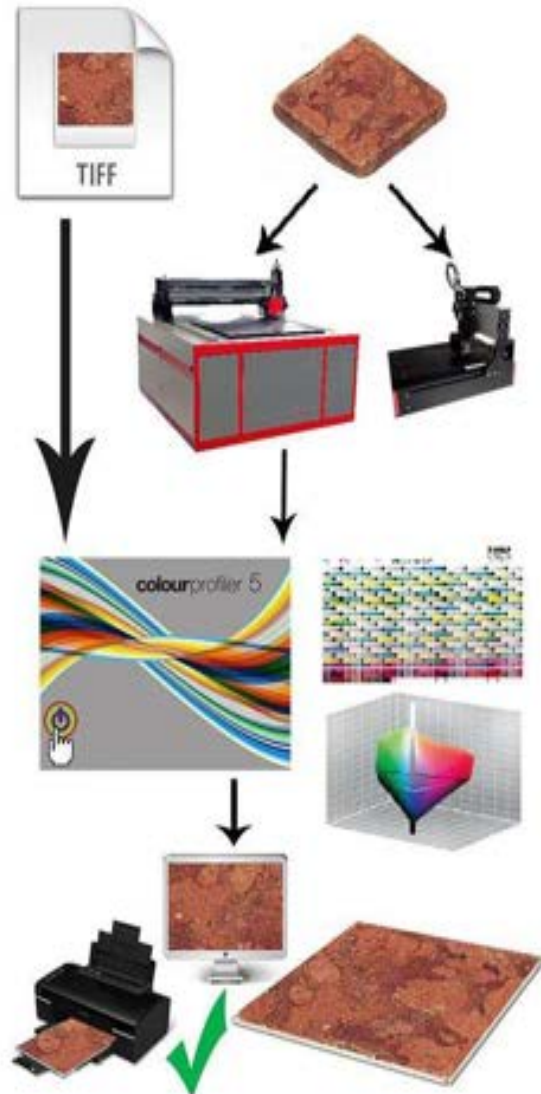


Calculate the ICC profile to use in the graphic software (Photoshop) for a perfect ceramic preview

And later?

THE IDEA ABOUT COLOR MANAGEMENT

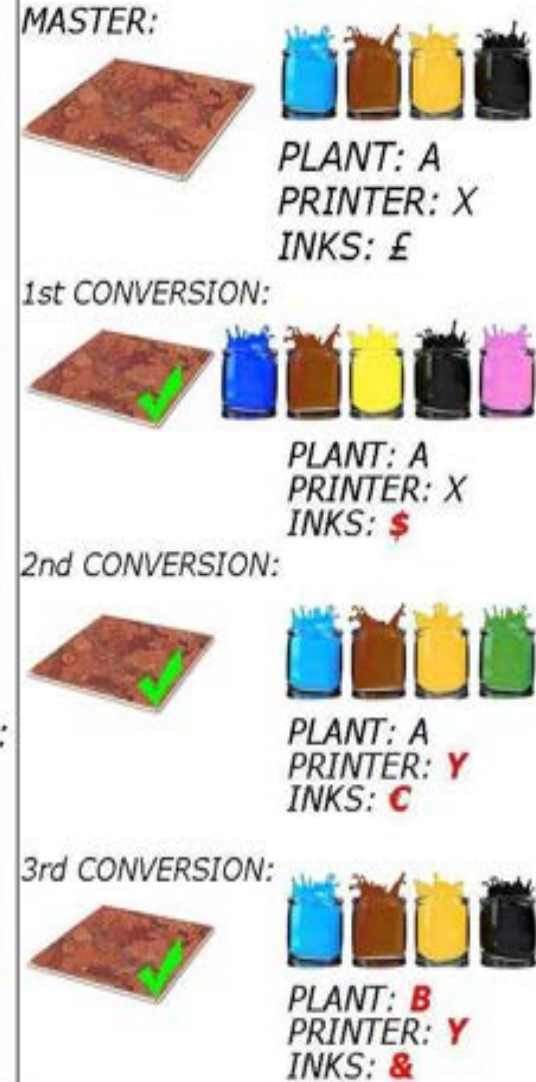
PROFILATION



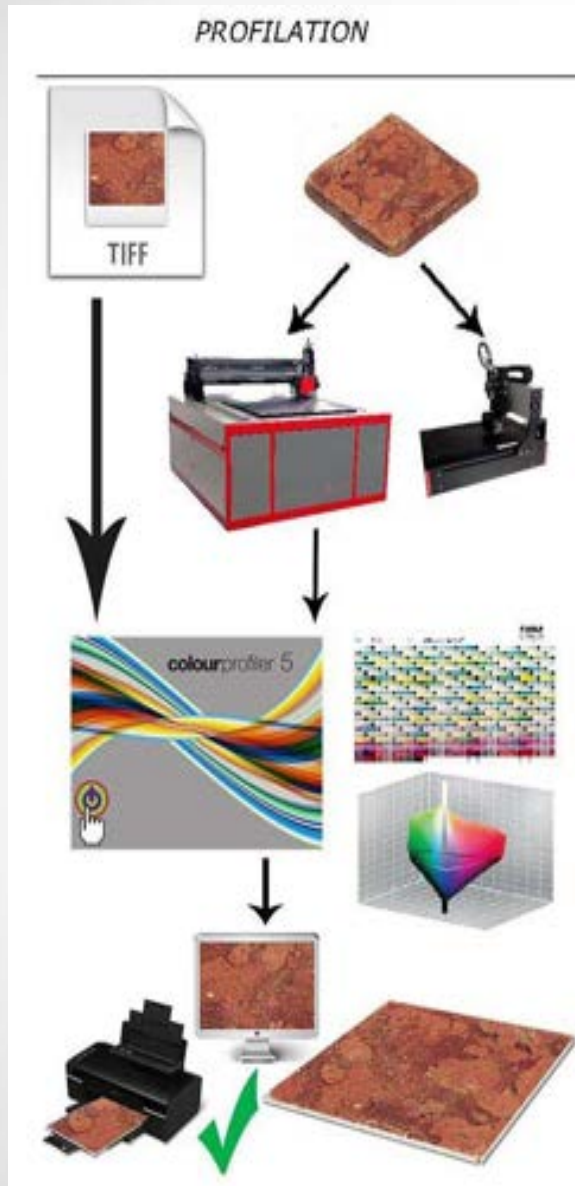
DEVICE LINK - Variation in ceramic line



DEVICE LINK - Variation in production conditions



PROFILATION



Starting from a spectral or a graphic file (tif), the software is able to generate the best possible output based on the available printing color gamut.

Colour Profiler software is able to work also with colored glazes, allowing the user to achieve reproducible shades not exclusively with the color of the inks:

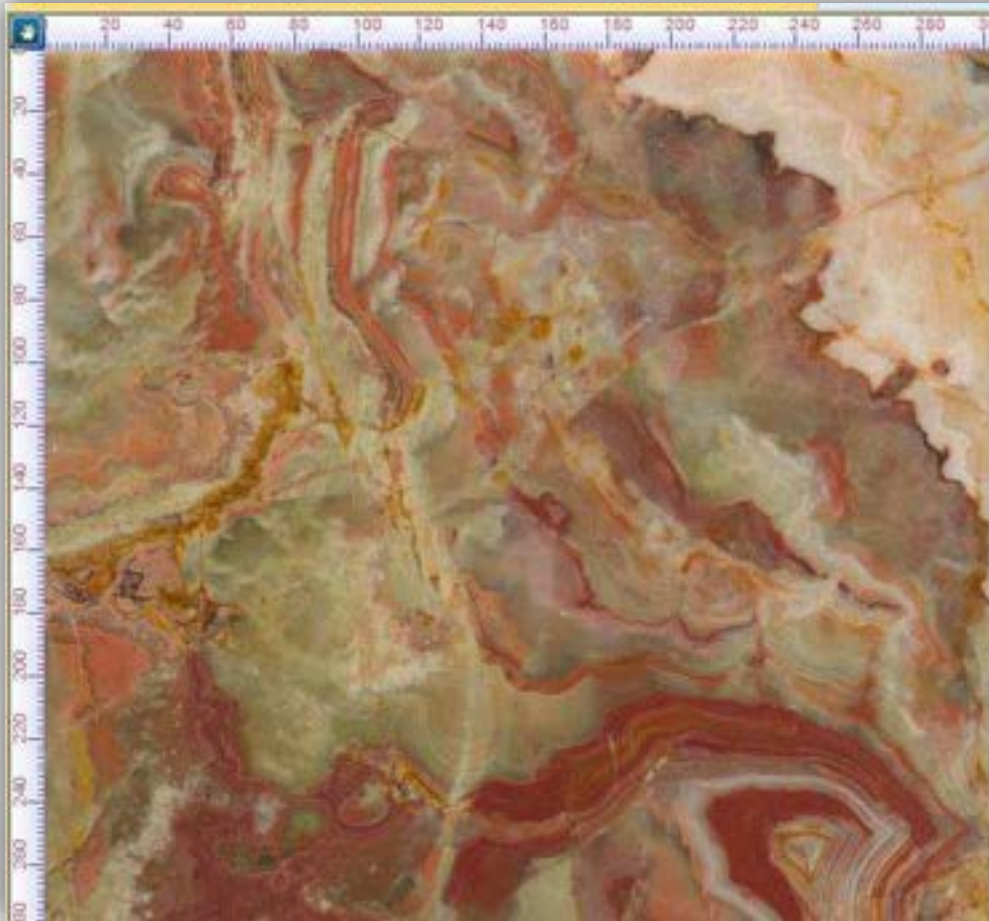
Less printhead «stress»
Reduction of the Inks' consumption



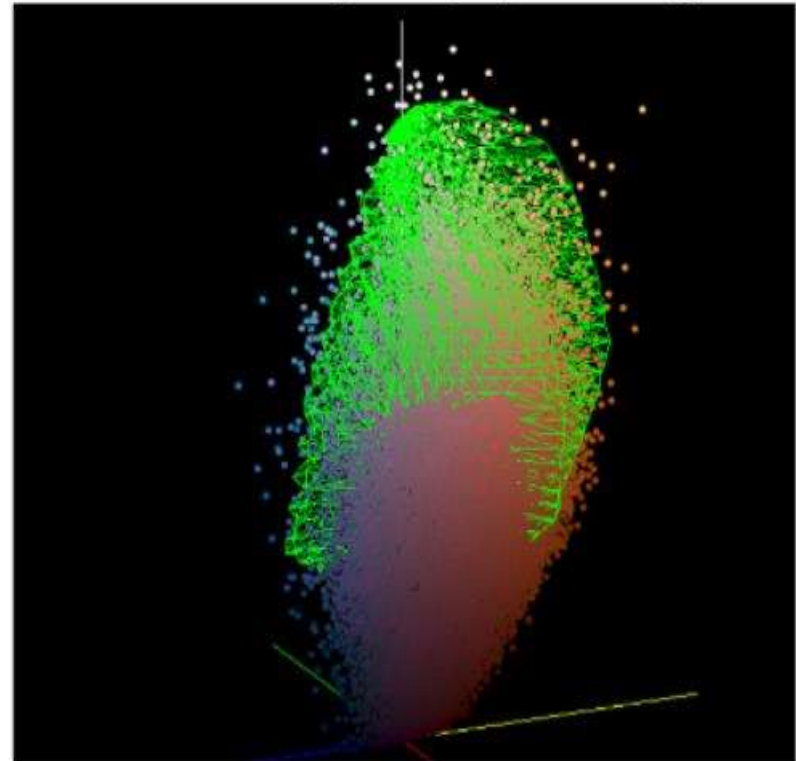
A good monitor preview and the possibility to generate a soft proof on paper (using a photographic paper color printer) allow the user to work in a fast, precise way

PROFILING: COLOR PROFILE SELECTION

Graphic comparison: gamut of the image Vs. gamut of the Inkjet printer.
Know immediately if the image will be ok or if is necessary to change something.



(the color gamut of the image compared with the destination ceramic gamut [in green color])



PROFILING: CHECKING AND COMPARISON

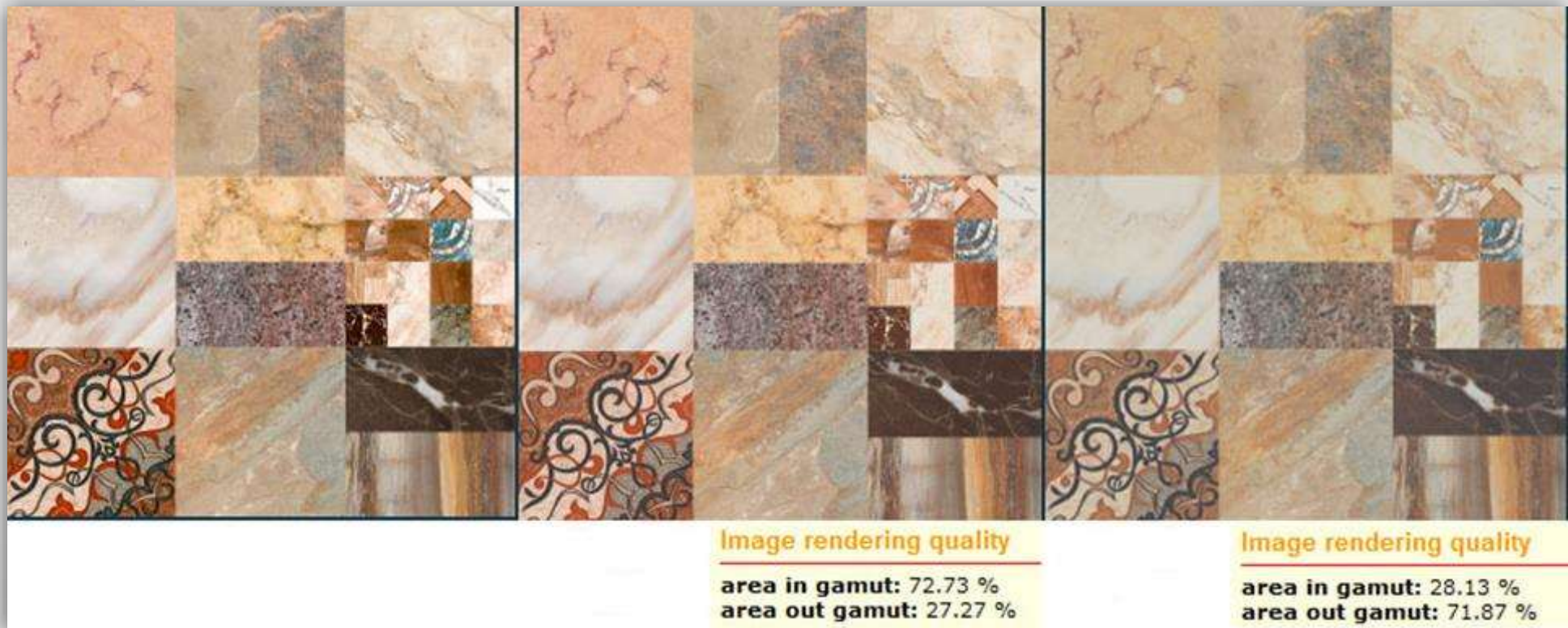
A precise preview allows to choose in advance the best printing condition for a project.



Original image

Printing condition A

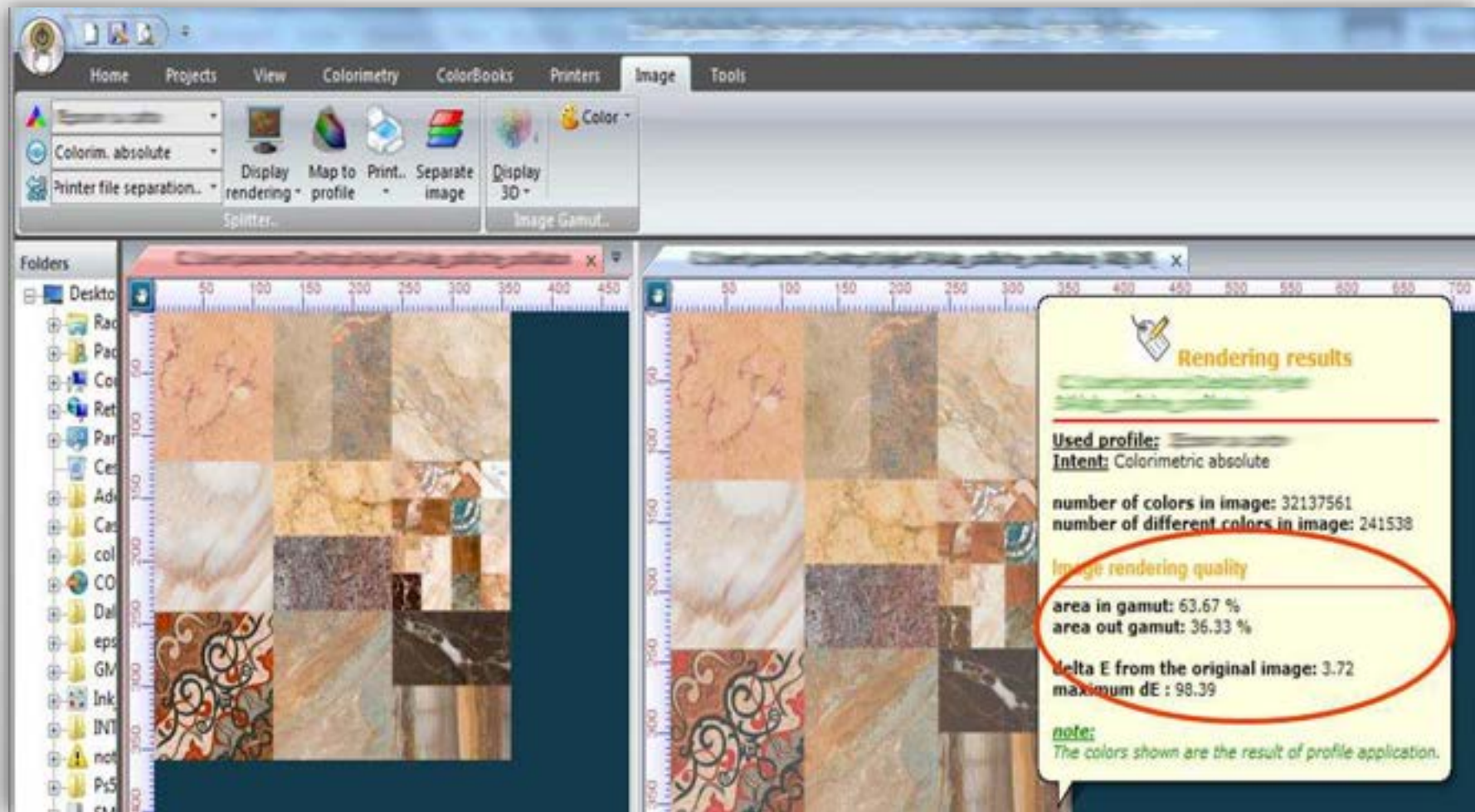
Printing condition B



The simulation is done directly on the file that need to be printed

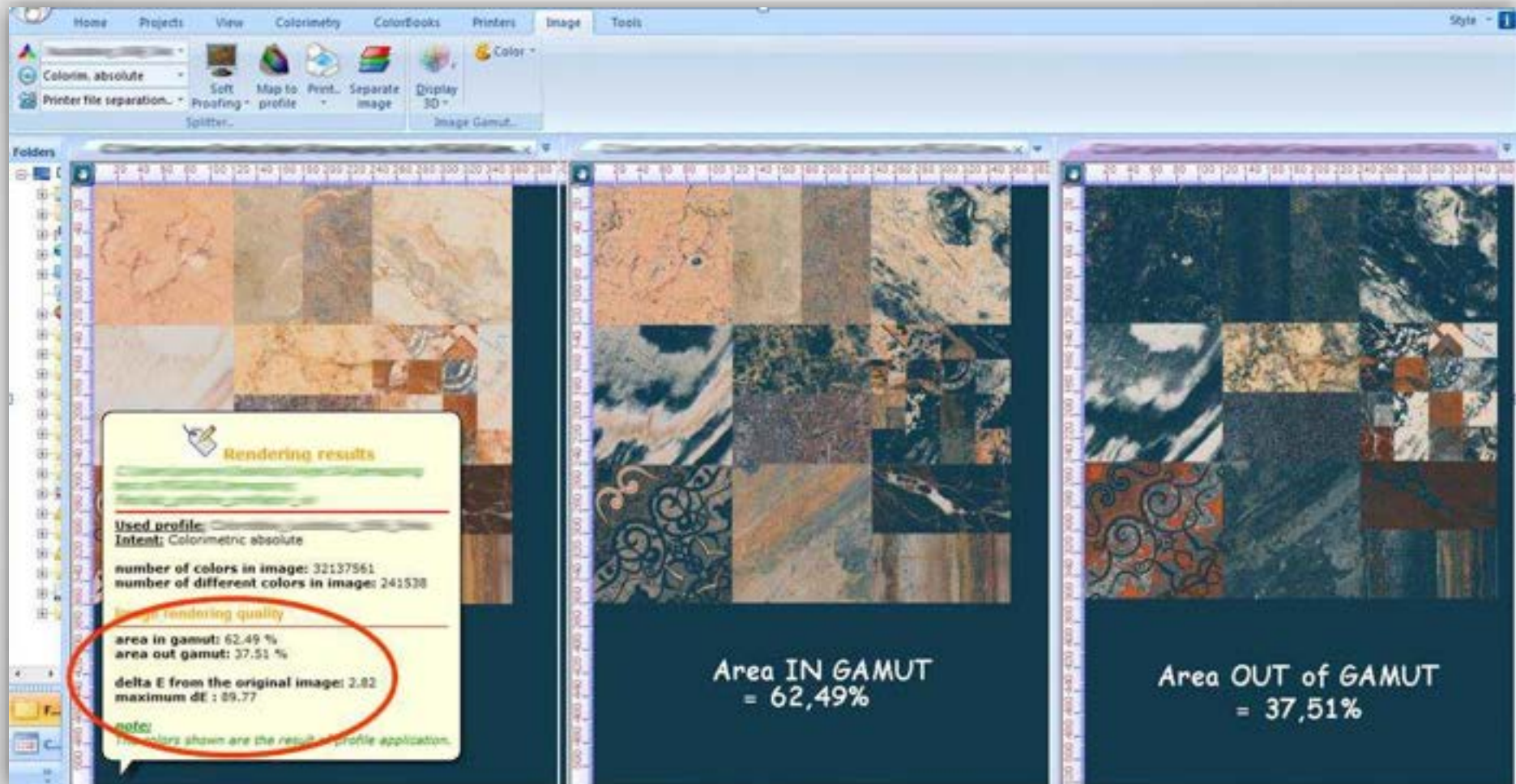
PROFILING: PREVIEW RENDERING

Preview of the result with the % indication of the area IN and OUT of gamut.
 Indication of the Delta E from the original image



PROFILING: PREVIEW RENDERING

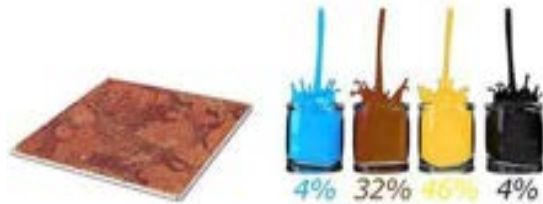
Graphic indication of the area IN and OUT of gamut



Perfect to know (if necessary) which area of the file needs a correction with a graphic software

DEVICE LINK – Variation in ceramic line

DEVICE LINK - Variation in ceramic line



2nd production



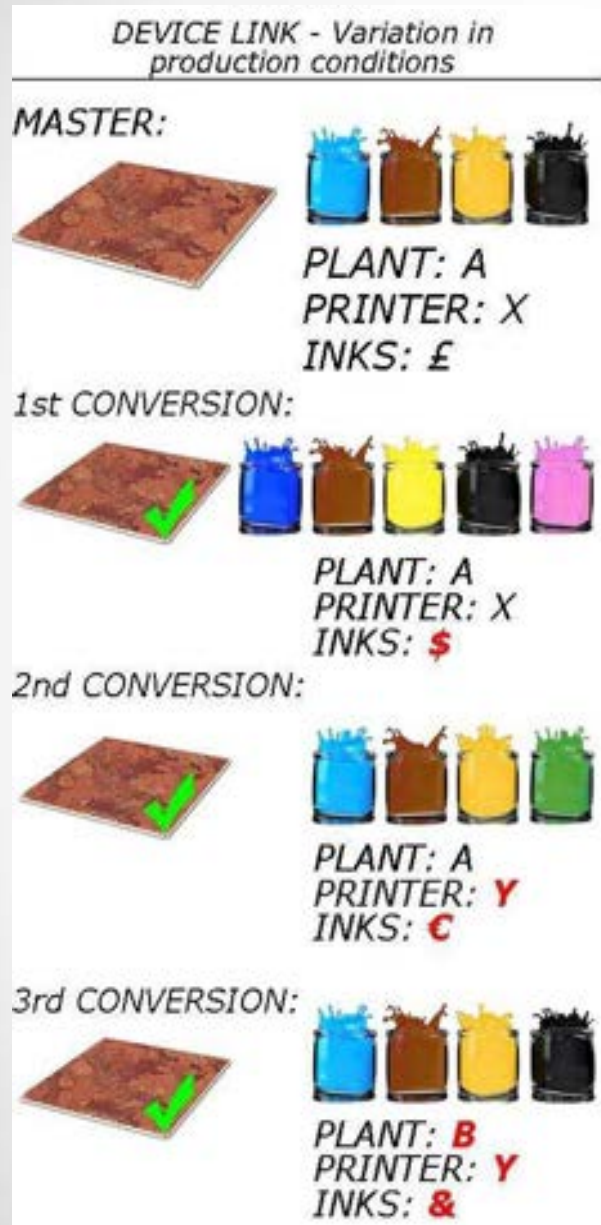
Device link with Colour Profiler:



Optimization and standardization of the process variables «transportability» of digital projects (move the project to another condition).

The software can help in order to «move» an existing production to a new printing condition. Immediately will be possible to know if the result will be ok in another production line.

DEVICE LINK – Variation in production conditions



Optimization and standardization of the process variables
«transportability» of digital projects (adapt the project to a production variation)

The software can help in order to reduce the time requested to return in production.

DEVICELINK

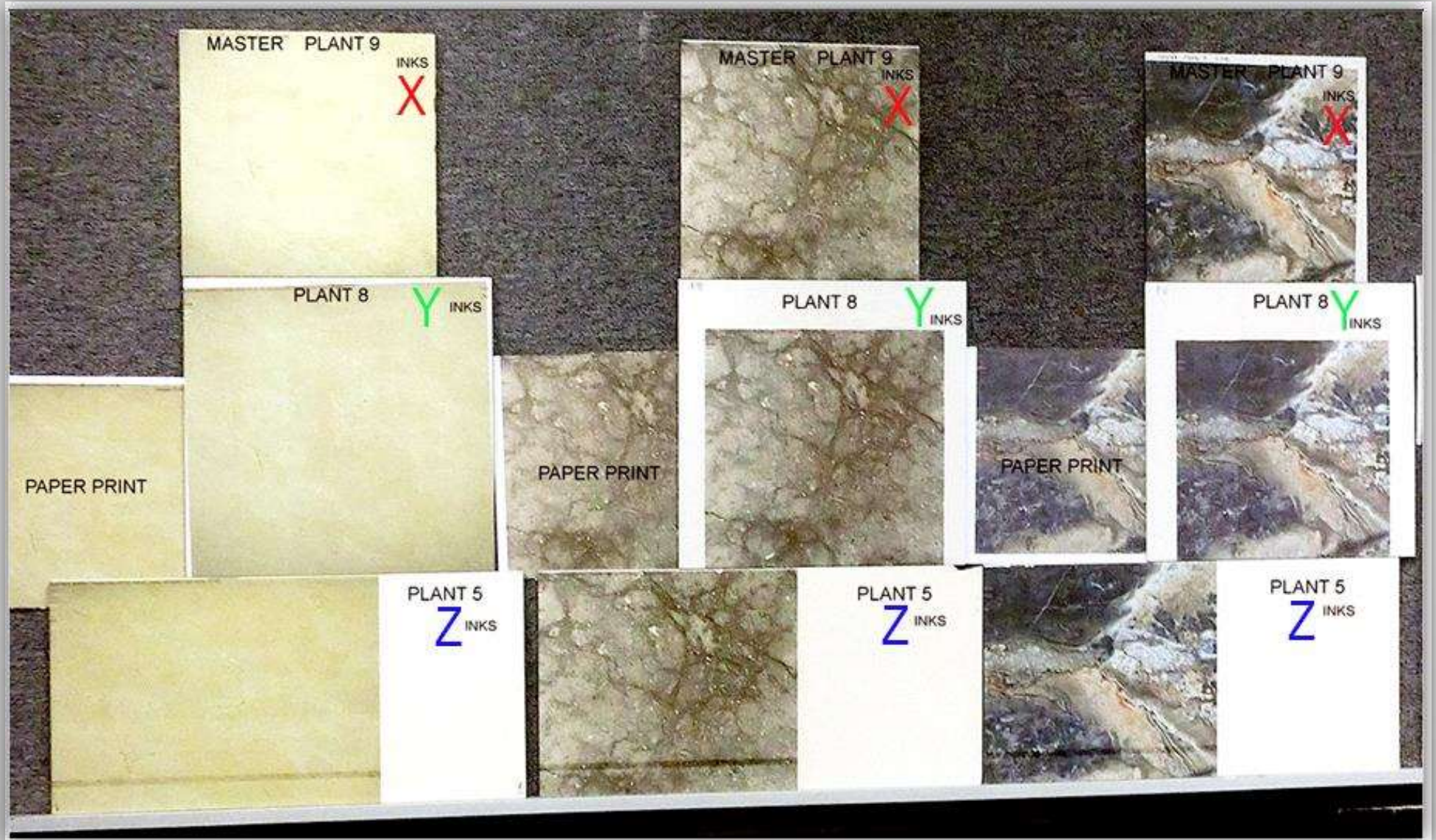
Some examples....



DEVICELINK

Some other examples....

From paper to ink supplier X, to ink's supplier Y, to ink's supplier Z, to.....



CHECKING AND COMPARISON

DIFFERENT GAMUT COMPARISON

Comparing different color gamut's to know immediatelly which one cover better the production's request

