



Coloratti © Kevin Wilson



PROFESSIONAL COLOR MANAGEMENT SOLUTIONS



Color. Perfected.



The new standard of color perfection.

No matter which type of Color Perfectionist you are,
you're sure to **maximize profitability and minimize
wasted time, ink and paper.**



i1 Professional Color Management Solutions provide a new level of perfection and value for the most demanding Color Perfectionists.

Color Perfectionists know that calibrated and profiled devices and systems are a critical and essential part of a successful, efficient, creative workflow. What you capture on your camera, see on your monitor (or projector), view on your proofs, prints and presses, or share online has to match or you and your customers will never be happy with the result, no matter how much time you devote to perfecting it.

Color Perfectionists and Imaging Professionals the world over rely on the range of i1 color management solutions for the highest level of color accuracy in the industry from **CAPTURE** to **VIEW** to **VIDEO** to **PRINT**.





X-Rite delivers a new family of i1 Professional Color Management Solutions. The bar has been raised higher than it's ever been to deliver a range of incredibly comprehensive, versatile and accurate color measurement, calibration and profiling solutions.

We redesigned everything to maximize your profitability, efficiency and accuracy. Whether you are looking for a solution to color manage your displays only or you need a comprehensive solution for your entire workflow, i1 solutions have long been the professional's choice for exceptional color matching results.

There's never been a better time to invest in an i1 solution. Color Perfectionists everywhere, whether you are a new consumer or current customer looking to upgrade, will love the results.



i1DISPLAY PRO

The i1Display Pro is the ultimate choice for discerning photographers, filmmakers, designers or any imaging professionals looking for the highest on screen color accuracy for displays, laptops and projectors. i1Display Pro provides serious Color Perfectionists with the perfect balance between speed, options and controls for unrivaled color precision.



i1BASIC PRO 2

i1Basic Pro 2 is a fundamental solution for professional level monitor and projector profiling, monitor and printing quality verification, and spot color measurement. Designed for an imaging professional's unique needs, i1Basic Pro is ideal for an effective workflow in a color-managed ecosystem.



i1PHOTO PRO 2

i1Photo Pro 2 is specifically designed for discerning photo and filmmaker professionals to manage their cameras, displays, projectors, scanners and RGB printers. Photographers will enjoy the highest quality color results that especially target highlight and shadow details and delivers greater color accuracy for more neutral grays and natural skin tones. With the new Optical Brightener Compensation capability, photographers can even optimize their prints by taking into account optical brightening agents often found in photo papers and create output profiles for specific lighting conditions in studios or galleries, or wherever the print will be displayed.





i1PUBLISH PRO 2

i1Publish Pro 2 is designed for imaging professionals working in prepress, digital printing, photography or design who rely on accurate color throughout their digital workflow – from cameras, monitors and projectors, scanners to RGB and CMYK+any4 printers and presses. Get the most color accurate displays, scans, prints and proofs, with repeatable results every time. With the included QA functions you'll also be able to check soft proofs on your monitor and verify output quality for your printer. With the Optical Brightener Compensation (OBC) capability users can easily adapt to any non-standard viewing environment. With the new M1 measurement capability, imaging professionals can rely on consistent measurement for visual matching under emerging industry standard viewing conditions.



i1PUBLISH

i1Publish is the ideal software suite for those customers who already own an i1Pro or i1iSis and rely on accurate color throughout their digital workflow. i1Publish includes the software and targets you need to get color accurate cameras, monitors, projectors, scanners, RGB and CMYK+ printers – with repeatable results every time. (i1Pro 2 spectrophotometer not included.)



i1PUBLISH AND i1PUBLISH PRO 2 UPGRADES

For current customers looking to upgrade, now is the perfect time to upgrade to the most accurate and reliable calibration and profiling solutions available on the market. Your investment will immediately begin paying for itself in reduced time, ink and paper. (Not to mention the ability to deal with the challenges caused by optical brightening agents.) Choose between an i1Publish software only upgrade or the even more powerful i1Publish Pro 2 hardware and software upgrade.



i1 ESSENTIAL COMPONENTS

Each i1 Pro solution combines world-class hardware and software delivering the ultimate professional level color management solutions for imaging pros.

i1 HARDWARE - Incredibly forward thinking to protect your investment well into the future.

Whether you're choosing a colorimeter based solution for your displays only or a spectrophotometer based solution for your entire professional imaging workflow, you'll be assured that you are getting world class devices designed to maximize your profitability, efficiency and accuracy. And our automated chart readers will add another level of productivity that will quickly get you to perfect color.



i1DISPLAY PRO COLORIMETER

Technologically advanced colorimeter for displays and projectors

i1Display Pro colorimeter features an advanced, high-end, optical system with custom-designed filters that provide a near perfect match to the color perception of the human visual system, delivering superior color measurement results. i1Display Pro supports all modern display technologies, including LED backlight and wide gamut displays. And it's spectrally calibrated, making it fully field upgradeable to support future display technologies.

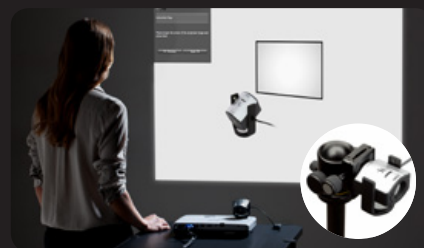
The ergonomic all-in-one design combines three important functions:



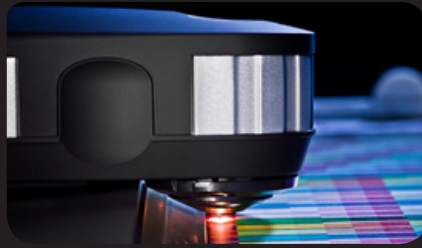
Ambient Light Measurement – an integrated ambient measurement diffuser allows you to take ambient light measurements of your work environment.



Display Profiling – rotate the ambient diffuser arm and adjust integrated counterweight, with push button action, along the USB cord for display profiling ease.



Projector Profiling – rotate the ambient diffuser arm to use as a tabletop stand for device positioning, or use the built-in threaded tripod mount for larger venues.



i1PRO 2 SPECTROPHOTOMETER

The most accurate, versatile and reliable profiling device available today

Built upon the success of X-Rite's i1Pro spectrophotometer as the de facto industry standard for more than a decade, i1Pro 2 features the next generation of our industry-leading technology delivering increased accuracy, ease of use and an expanded professional-level feature set including the latest developments in ISO standardization.

Highlights:

New illuminant design allows for 3 standard measurement conditions (ISO 13655 M0: Tungsten; ISO 13655 M1: D50; ISO 13655 M2: UV Cut) plus Optical Brightener Compensation (OBC) without changing filters or needing a second instrument and ensures your investment well into the future.

Enhanced Optical Brightener Compensation allows for the most accurate profiling for today's enhanced range of substrates. Now users can predict what colors printed on optically brightened paper will look like under both standard and specific light conditions using a single hand-held device.

Positioning Detection Sensor provides a more robust scanning experience even on special substrates and low-resolution printers. It allows for the measurement of smaller patch sizes (as low as 7mm) in manual mode saving time and money on consumables and enabling dual measurement workflows for OBC, M1 and M2.

New Status LED guides users through the measurement process and provides feedback on device status, improving the user experience and saving time.

New Design Ergonomics throughout allows for greater usability, flexibility, cleaning, protection, and storage of the precision i1Pro 2 device, assuring the highest level of reliability and productivity.

Better temperature stability and higher brightness levels improve emissive measurement, resulting in the best possible calibration and profiling of monitors and projectors.

All new diagnostics and self-correction features Built-in wavelength calibration technology allows for self-diagnosis of optical grating in relation to sensor during white calibration (with automatic correction and notifications) eliminating worry about your device's measurement accuracy.

Maintaining and protecting the device (and investment) is easier than ever

Self-cleanable aperture protection glass and calibration white tile cover provides additional built-in protection from dust and dirt keeping your device working at top performance at all times.

XRGA equipped

i1Pro 2 is equipped with the X-Rite Graphic Arts Standard (XRGA) to make it quicker and easier for companies and professionals involved in digital production printing to adhere to ISO standards and have confidence that data sent or received from all links in the supply chain is reliable and repeatable.



reddot design award
winner 2012



product
design award

2013

i1 AUTOMATED CHART READERS



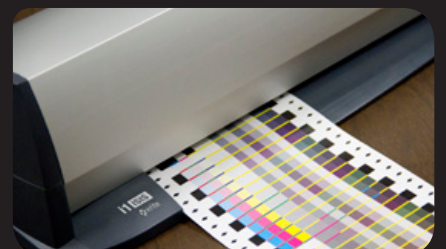
i1i0

i1i0 extends the power of your i1Pro 2 device by adding automated hands-free test chart reading capabilities on various substrates up to 10 mm – from thin polybag material to ceramics and textiles. Simply plug in the i1Pro 2 device, align the test chart, and the scanning table does all the work. Plus, you'll still maintain all the great versatile functionality provided by your i1Pro 2 solution.

This 2nd generation i1i0 is delivered with a newly designed footplate that accommodates both the original i1Pro and the new i1Pro 2 spectrophotometers.

i1iSis

In high production environments like photo processing, large format, fine art and digital printing, measuring color test charts to keep your color management profiles up-to-date can be a labor intensive and time consuming process. i1iSis automated chart readers sets a new standard in terms of speed, accuracy and handling. It's available in both standard (A4+ and letter) and XL (A3+ and tabloid) sizes, reading thousands of patches in less than 10 minutes. Based on award-winning i1 spectral technology assures you'll capture full spectral data for the most accurate measurements and profiles.



i1 SOLUTIONS AT A GLANCE

i1Display Pro

i1Basic Pro 2

i1Photo Pro 2

i1Publish Pro 2

i1Publish
Upgrades A&B

i1Publish Pro 2
Upgrades A&B

Hardware

i1Display Pro Colorimeter



i1Pro 2 Spectrophotometer



Software

i1Profiler

Display



Display QA



Projector



Scanner



RGB Printer



CMYK Printer



CMYK+ Printer



Printer QA



PANTONE Color Manager



ColorChecker Camera Profiling



Targets

ColorChecker Classic (mini)



ColorChecker Proof





Color. Perfected.

i1Profiler Software Specifications

Macintosh®

- MacOS X 10.6.x, 10.7.x and 10.8x (with the latest updates installed)
- 512MB RAM (2GB recommended)
- Intel® Core Duo Processor
- Up to 500MB of available disk space (depending on components installed)
- Powered USB Port
- Monitor resolution of 1024x768 pixels or higher
- Dual display support requires either 2 video cards or a dual head video card that supports dual video LUTs being loaded
- DVD drive or high-speed internet connection required for software install, download and automatic software update
- User must have administrator rights to install and uninstall application

Windows®

- Microsoft® Windows® XP® 32 bit
- Microsoft® Windows Vista® 32 or 64 bit
- Microsoft® Windows 7® 32 or 64 bit
- Microsoft® Windows 8® 32 or 64 bit
- All operating systems require latest updates and Service Packs installed
- 512MB RAM (2GB recommended)
- Intel® Core 2 Duo or AMD® Athlon® XP or better CPU
- Up to 500MB of available disk space (depending on components installed)
- Powered USB Port
- Monitor resolution of 1024x768 pixels or higher
- Latest drivers for video card installed
- Dual display support requires either 2 video cards or a dual head video card that supports dual video LUTs being loaded
- Network adaptor installed and driver loaded
- DVD drive or high-speed internet connection required for software install, download and automatic software update
- User must have administrator rights to install and uninstall application

i1Profiler is available in the following languages:

- Chinese (Simplified)
- English
- French
- German
- Italian
- Japanese
- Portuguese
- Spanish
- Russian

Distributed by



Seedex
Printing Products, Technology and Services from Italy

Via Falzarego, 9/9A - 41049 Sassuolo (MO) - ITALY
Tel. +39 0536 905606 - Fax +39 0536 815690
www.seedex.it - mail@seedex.it



Seedex
Printing Products, Technology and Services from Italy